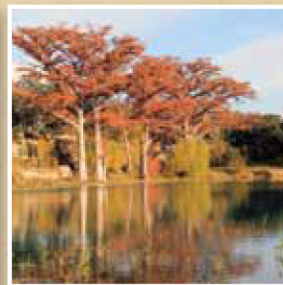
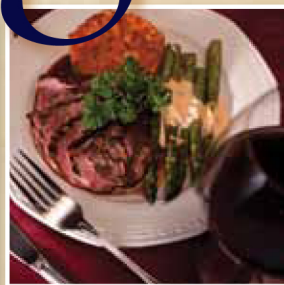




Wingshooter's Paradise



Paradise

Since opening in 1990, Joshua Creek Ranch has never lost sight of its original objective to deliver an exceptional experience to every hunting guest every time they visit. Consistently hard-flying upland birds, well-trained pointing, flushing and retrieving dogs handled by professional guides, prime habitat, good food and clean, comfortable accommodations are the components of the experiences that have kept clients returning to this award-winning Beretta Two-Trident Lodge year after year for 23 years.

“Our standard is “excellence” in every area of our operation everyday for everyone,” says co-founder Joe Kercheville. “And the standard never waivers since the ranch manager, my partner/wife, Ann, is a bit of a perfectionist. Our entire staff is dedicated to excellence which lends to their own pride in this operation.”

Over the years, Joshua Creek Ranch has committed significant resources to various improvements aimed at enhancing hunters’ experiences at the ranch. Good habitat is critical to quality upland bird hunting and the Kercheville’s have spent years establishing improved grasses ideal for quail, pheasant and partridge throughout the ranch. Recent drought years has prompted vast re-seeding to ensure accelerated habitat recovery. Steady, year after year expansions and upgrades have enhanced guests’ enjoyment of the Joshua Creek Ranch’s lodging facilities on sites with spectacular Hill Country views.

Ranch chefs create new and interesting wild game recipes each hunting season to the delight and enjoyment of hunting guests.

But one particular wingshooting option remained a challenge to offer with confidence and consistency at Joshua Creek Ranch...seasonal whitewing and mourning dove hunting. Located in the Central Zone for Texas dove hunting, the opportunities for shooting a limit at the Ranch were described as “unpredictable.” Despite annual planting of acres and acres of grain and other crops attractive to dove, and building ponds and stock tanks strategically around the ranch, the dove population that might look promising in August would move out come September.

In 2011, a plan was launched to use Joshua Creek Ranch’s premier lodging and dining facilities for dove hunters and shuttle them just an hour to the Hyw 90 corridor west of San Antonio in the vicinity of Castroville and Hondo, where September dove flights are phenomenal. Having located outfitters with the best dove fields and paired that with Joshua Creek Ranch’s best in guest amenities, this plan has rounded out the wingshooting packages offered by the Ranch. “Just wish we’d thought of this plan sooner,” Joe mused. “It’s another winner for our bird hunting enthusiasts.”

